

**Pass IT Exam**

*Smart World Enabler*

[www.PassITExam.com](http://www.PassITExam.com)

**Demo Study Guide**

# CompTIA Demo

## A+ Operating System Technologies

**220-222**

[www.passitexam.com](http://www.passitexam.com) All rights Reserved

**QUESTION NO: 1**

**What is the main function of a WINS server on the network?**

- A. It assigns IP addresses.
- B. It assigns computer names.
- C. It resolves NetBIOS names to IP addresses.
- D. It allows dual booting between operating systems.

**Answer: C**

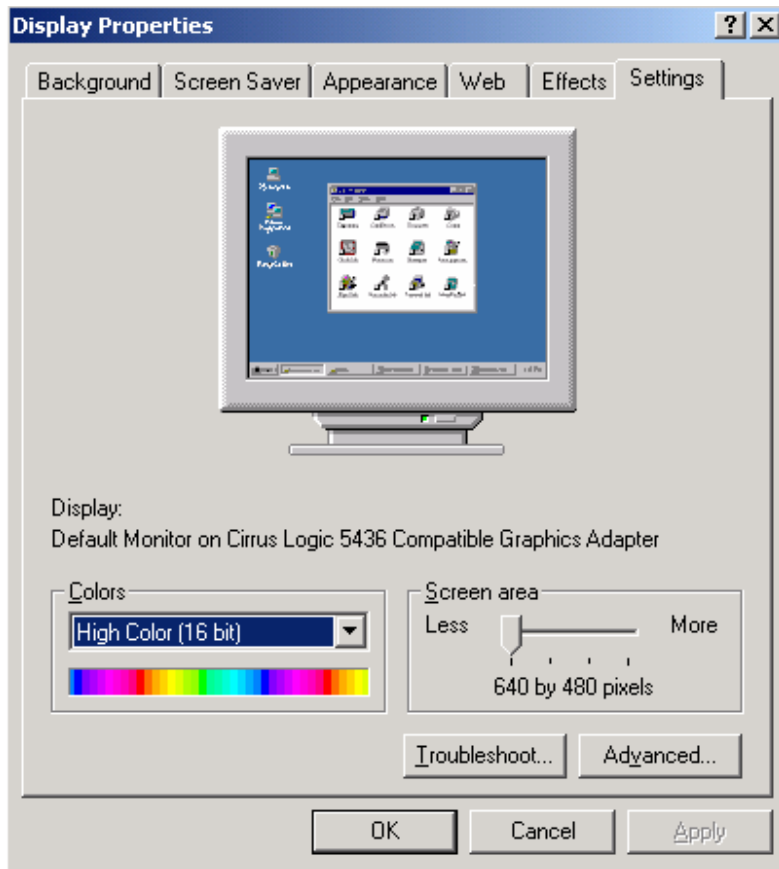
**Explanation:** A WINS server provides NetBIOS to IP address resolution.

**Incorrect Answers**

- A:** DHCP assigns IP addresses.
- B:** Computer names are not assigned by any network service.
- D:** The Windows boot manager is used for dual booting.

**QUESTION NO: 2**

**Your customer calls and explains that he can't display an entire web page even though he has a 17 inch monitor. He has to use the scroll bars to go from right side to the left side. What change would you make to the display settings. See exhibit.**



- A. Click advanced and change to large font.
- B. Click advance and change the screen size.
- C. Slide the screen area bar over to 800 into 600.
- D. Adjust contrast control until the screen has shrunk in size.

**Answer: C**

**Explanation:** We should increase the screen resolution.

**QUESTION NO: 3**

**A user is connected to Internet through an ISDN connection. He visits three different sites. Suddenly a message is given indicating that the site is unavailable. What might be the problem?**

- A. The host server is down.
- B. The local IP has changed.
- C. The host protocol is incorrect.
- D. The NetBEUI time exceeded.

**Answer: A**

**Explanation:** The server hosting that particular site might be down.

**Incorrect Answers**

**B:** If the local IP changes you would still be able to access internet sites.

**C:** There is no such as a host protocol here.

**D:** NetBEUI is not used on Internet. Furthermore, there is no NetBEUI time setting.

**QUESTION NO: 4**

**How do you connect to news groups when using an ISP to connect to the internet?**

- A. Contact inter-NIC for connection information.
- B. Open Control Panel and select the news group option.
- C. Obtain the IP address for the NNTP server from the ISP.
- D. Contact the ISP and get IP address of the FTP server.

**Answer: C**

**Explanation:** NNTP (Network News Transfer Protocol) is a standard specification for the distribution, inquiry, retrieval, and posting of news articles using a server-client model.

**QUESTION NO: 5**

**What would you run from the command prompt to check drive C for surface errors before Windows 9x starts?**

- A. CHKDSK C:/M
- B. SCAN C:/SURFACE
- C. SCANREG C:/REPAIR
- D. SCANDISK C:/SURFACE

**Answer: D**

**Explanation:** When a small portion of a disk can no longer hold data, it is called a bad sector. The surface scan option of ScanDisk detects bad sectors, and updates the housekeeping areas of the disk so the bad sectors will not be used for file storage.

**Note:** SCANDISK can reliably detect and fix a much wider range of disk problems and is generally preferred to the somewhat dated CHKDSK.

**Incorrect Answers**

- A:** CHKDSK cannot fix surface errors. Furthermore, the CHKDSK command in Windows 9x does not have a /M switch, only /F and /V switches.
- B:** The SCAN command does not exist.
- C:** SCANREG is used for the registry, not the surface of the disk.

**QUESTION NO: 6**

**How many entries can be contained within the root directory under Windows 9x?**

- A. 512
- B. 1024
- C. 65,536
- D. No Limit

**Answer: A**

**Explanation:** The answer to this question is not clear as it depends whether the FAT16 or the FAT32 file format is in use. FAT16 hard disk partitions have a maximum of 512 root directory entries. The maximum number of entries in a sub-directory, or the root directory with FAT32, cannot be allowed to exceed 65536.

The original version of Windows 95 (Version A) only supports FAT16. Later versions of Windows 9x, Windows 95 Version B and later, support both FAT16 and FAT32. The answer A) assumes that FAT16 is used on the partition.

**Incorrect Answers**

- B:** The limit of entries in the root directory on a FAT16 partition is 512, not 1024.
- C:** FAT32 has the limit of 65,536 entries in every subdirectory, including the root directory.
- D:** Both FAT16 and FAT32 has limitations on the number of entries of the root directory.

**QUESTION NO: 7**

**The user gets an out of memory message when he tries to print. The service technician checks and there is plenty of space on the hard drive. What is causing this error?**

- A. Drivers need upgrading.
- B. Spool folder was deleted.
- C. Printer needs more memory.
- D. System needs more memory.

**Answer: D**

**Explanation:** The user gets an out of memory message from his PC. This indicates that the PC has too little RAM to be able to print the document. One possible solution to this problem is to upgrade the RAM of the system.

**Incorrect Answers**

- A:** It is not likely, though not entirely impossible, that updating drivers would fix the problem at hand.
- B:** If this spool folder was deleted, then the system would either regenerate the spool folder, or it would display another type of error message.
- C:** We can safely assume that it is the PC of the user that reports the out of memory message. However, additional memory to the printer could help, but it is not the best solution.

**QUESTION NO: 8**

**A recently installed application launches each time Windows 95 starts. In order to disable the auto launch what should you check? (Choose two)**

- A. WIN.INI
- B. REGISTRY.
- C. SYSTEM.INI
- D. SETUP GROUP.
- E. CONFIG.SYS

**Answer: B, C**

**Explanation:** The registry and the system.ini file both contain applications that are launched every time the system is restarted.

**Incorrect Answers**

- A:** WIN.INI does not contain any startup configuration settings.
- D:** In Windows 9x there no such thing as a SETUP GROUP.
- E:** CONFIG.SYS is used for device drivers, not for auto launch of applications.

**QUESTION NO: 9**

**Which of the following can the Add/remove hardware applet perform in Windows 2000? (Choose two)**

- A. Configure the registry.
- B. Uninstall the device driver.
- C. Troubleshoot an existing device.
- D. Reconfigure a multiple display layout.
- E. Disable a PC card drive before it is removed

**Answer: B, C**

**Explanation:** The Add/remove hardware applet can be used to uninstall a device driver and to troubleshoot a device.

**Incorrect Answers**

**A:** To edit the registry the regedt32.exe or the regedit.exe utilities should be used.

**D:** The Display applet should be used to configure use of multiple monitors.

**E:** The Device Manager should be used to disable device.

**QUESTION NO: 10**

**While logged on as administrator you installed an application on a Windows NT 4.0 workstation. After creating a shortcut in the all users profile you test the application shortcut and it works fine? The users calls and says that the application does not run? What is the problem?**

- A. Application was not installed by the user.
- B. NTFS permissions prevent her from running the application.
- C. The shortcut points to a different file from the newly installed copy.
- D. The Everyone group is missing in the application security properties.

**Answer: B**

**Explanation:** The shortcut seems to be correctly configured. However, the user might not have NTFS execute permission to the application file.

**Incorrect Answers**

**A:** The user needs to install the applications he wants to run. An administrator or a service technician usually installs the applications.

**C:** The shortcut is correctly configured as you as the administrator is able to use it.

**D:** The Everyone group do not need to have access to the application. Furthermore, in Windows NT you don't set security properties to an application.